

Holland  America

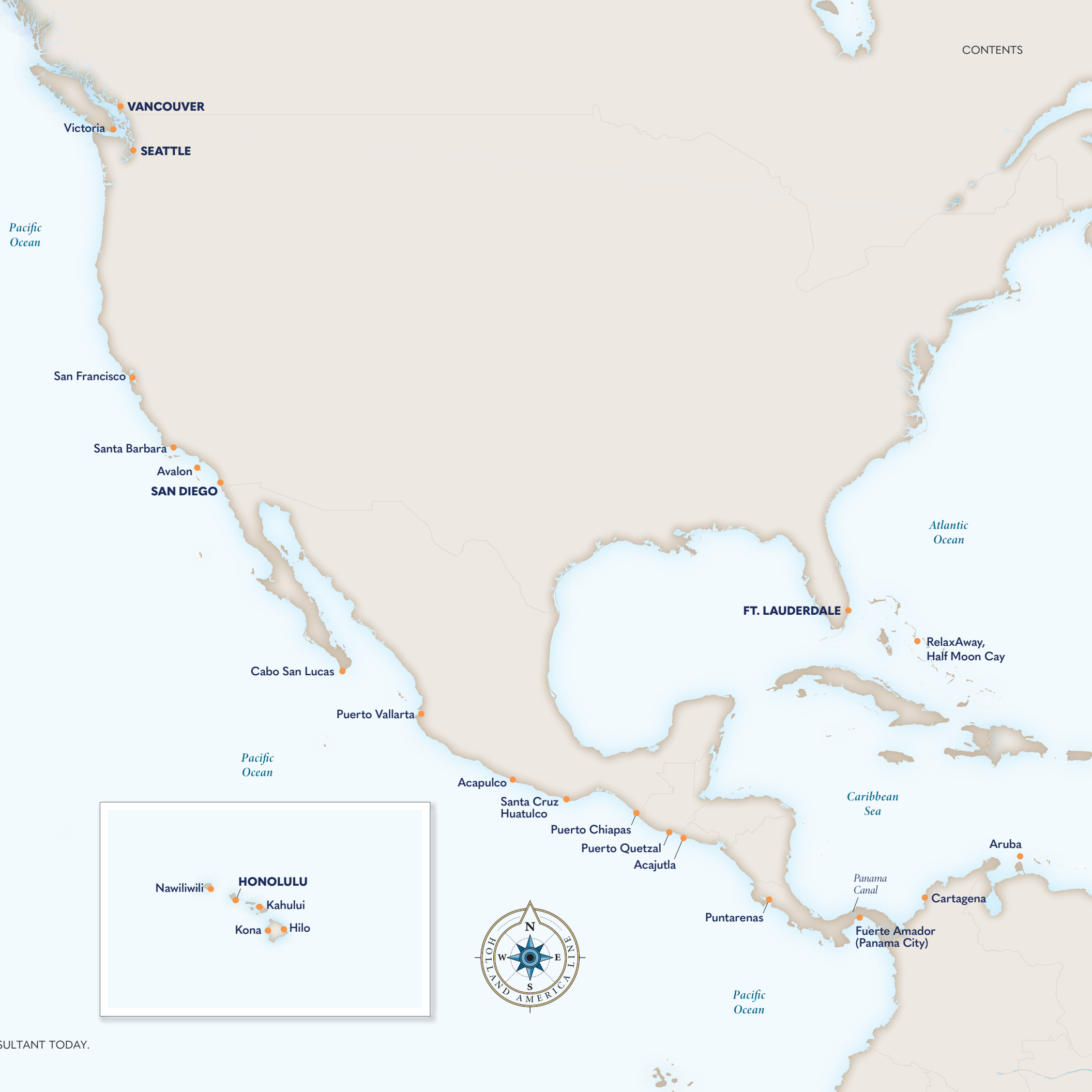
# Hawaii & Panama Canal

SEPTEMBER 2026–APRIL 2027 CRUISES



# Contents

WHY CRUISE HAWAII & THE PANAMA CANAL WITH US	2
UNESCO SITES	3
EXPERIENCE A PANAMA CANAL MAN-MADE MARVEL	4
CROSS THE PANAMA CANAL OFF YOUR BUCKET LIST	5
<b>FEATURED</b> 15-DAY PANAMA CANAL	6
14- TO 16-DAY ITINERARIES	7
PANAMA CANAL ITINERARIES	8
PANAMA CANAL SHORE EXCURSIONS	9
<b>HAWAII: THE SPIRIT OF ALOHA</b>	10
A HAWAIIAN HOLIDAY	11
17- TO 18-DAY ITINERARIES	12
HAWAII ITINERARIES	13
HAWAII SHORE EXCURSIONS	14
<b>COLLECTORS' VOYAGES</b>	15
<b>YOUR HOME AT SEA</b>	16
<b>HOLLAND AMERICA TRADITIONS</b>	17
<b>DINING, BARS &amp; LOUNGES</b>	18
<b>DESTINATION DINING™: FRESH LOCAL INGREDIENTS</b>	19
<b>ACTIVITIES DAY &amp; NIGHT</b>	20
<b>THE ULTIMATE SPA EXPERIENCE</b>	21
<b>HAVE IT ALL EARLY BOOKING BONUS</b>	22
<b>TERMS &amp; CONDITIONS</b>	23



# Top Reasons

TO CRUISE HAWAII & THE PANAMA CANAL WITH HOLLAND AMERICA



Na Pali Coast, Kauai, Hawaii



## AWARD-WINNING, PERSONALIZED SERVICE

Awarded “Best Service” by Cruise Critic for three years in a row, our crew’s attentive care makes anyplace feel like home.



## IMMERSIVE SHORE EXCURSIONS

Enjoy authentic local experiences such as hands-on cooking classes, immersive visits to historic sites, and plentiful wildlife-viewing opportunities.



## NATURAL & MAN-MADE MARVELS

From awe-inspiring Hawaiian volcanoes to the intricately engineered Panama Canal, unpack once and witness a world of wonders.



## PORT-TO-PLATE DINING

On board, savor fresh local specialties such as sweet golden pineapple, Pacific mahi-mahi, and fresh-picked chili peppers.



## CAREFULLY CURATED ITINERARIES

Sail from a convenient domestic port and explore four Hawaiian Islands or embark on a full Panama Canal transit and visit up to 10 different countries.



## PERFECTLY SIZED SHIPS

Our ships pass through the Panama Canal with ease while providing you plenty of room to relax.

# UNESCO

## SITES

Visit multiple UNESCO World Heritage sites plus a UNESCO Biosphere Reserve on your Panama Canal journey. Known as the “Pompeii of the Americas,” the Joya de Cerén Archaeological Site in El Salvador provides a glimpse of ancient Mayan life. In Panama City, explore Panamá Viejo – the oldest European settlement on the Pacific coast of the Americas. Enjoy rare birds, giant ferns, and unique geological formations at Hawaii Volcanoes National Park.



Joya de Cerén Archaeological Site, El Salvador



Panamá Viejo, Panama City, Panama



Hawaii Volcanoes National Park, Hawaii, Hawaii



# EXPERIENCE A PANAMA CANAL Man-Made Marvel

The Panama Canal consists of three locks which raise and lower the ship along its journey. The variety of birds and wildlife in the surrounding forest, combined with the feat of engineering that is the canal itself, make for a unique experience best undertaken by sea vessel.

The **Gatun Locks** are the closest to the Atlantic Ocean. Their three chambers lower the ship a total of 85 feet back to sea level.



Next are the **Pedro Miguel Locks**, whose single chamber raises the ship 31 feet up to Lake Gatun.



The **Miraflores Locks** are the closest to Panama City and the Pacific Ocean. After entering the locks, you'll feel their two chambers raise the ship 54 feet above sea level to match Lake Miraflores.



# CROSS THE Panama Canal OFF YOUR BUCKET LIST

With convenient departures from Ft. Lauderdale, Miami, San Diego, Seattle, and Vancouver, you can travel from coast to coast while leisurely exploring the Caribbean, South America, Mexico, and more.

- Pass through the precision lock system of the Panama Canal
- Watch for monkeys and toucans while cruising past lush rain forest
- Learn about the Mayan Tree of Life while savoring local chocolates
- Go back in time and explore colonial Antigua and Barbuda
- Taste the vibrant flavors of Cartagena during a local food tour



FEATURED

# 15-DAY PANAMA CANAL

**SAN DIEGO TO MIAMI** *Zuiderdam* **2027 Jan 30**

- Enjoy six different countries, seven different ports, and an overnight stay in Panama City
- Explore UNESCO World Heritage sites such as the Archaeological Site of Panamá Viejo and the colonial capital of Antigua
- Look for wildlife from the deck as you transit the 100-year-old engineering wonder that is the Panama Canal
- Craft your own souvenir during an emerald jewelry-making class in Cartagena
- Bury your toes in the sand on our award-winning private island, RelaxAway, Half Moon Cay



Panama Canal, Panama

# 14- to 16-Day Itineraries

Each of our Panama Canal cruises features a full transit of one of the modern world's greatest feats of engineering. Enjoy a 14- to 16-day sailing between Ft. Lauderdale or Miami and San Diego or sail the sun-dappled California coastline on a 20- or 21-day itinerary to or from the Pacific Northwest.

## FEATURED PORTS



Huatulco, Mexico

### SAVOR THE FLAVORS OF HUATULCO

Find serenity on one of Huatulco's 36 beautiful beaches or get your heart racing while whitewater rafting the Copalita River. Discover the heart of Oaxaca while visiting local communities and taste some of the region's unique cuisine, such as sweet *nopales* (cactus), savory *mole*, and indulgent chocolate.



Monumento Torre del Reloj, Cartagena, Colombia

### STROLL THROUGH HISTORY IN CARTAGENA

Feel the past come alive as you explore the UNESCO-listed fortress walls of Cartagena. Get to know the locals during a cooking class or emerald jewelry-making workshop. Or, from breakfast *arepas* to coconut candy, sample your way around the city on a local street food tour.



#### 14-DAY PANAMA CANAL

Miami to San Diego

**Zuiderdam**  
2027 Jan 2



#### 14-DAY PANAMA CANAL

Ft. Lauderdale to San Diego

**Eurodam**  
2027 Apr 3



#### 14-DAY PANAMA CANAL

Ft. Lauderdale to San Diego

**Zaandam**  
2027 Mar 14



#### 15-DAY PANAMA CANAL HOLIDAY

San Diego to Ft. Lauderdale

**Zaandam**  
2026 Dec 19★



#### 16-DAY PANAMA CANAL

San Diego to Ft. Lauderdale

**Nieuw Amsterdam**  
2026 Oct 2



#### 16-DAY PANAMA CANAL

San Diego to Ft. Lauderdale

**Eurodam**  
2026 Oct 8



# PANAMA CANAL ITINERARIES



Keel-billed toucan, Costa Rica



**17-DAY  
PANAMA CANAL**

Ft. Lauderdale to San Diego

**Nieuw Amsterdam**  
2027 Apr 11



**20- OR 21-DAY  
PANAMA CANAL**

Seattle or Vancouver to Ft. Lauderdale

**Eurodam**  
2026 Oct 3 or 4



**20- OR 21-DAY  
PANAMA CANAL**

Ft. Lauderdale to Vancouver or Seattle

**Eurodam**  
2027 Apr 3



**21-DAY  
PANAMA CANAL**

Vancouver to Ft. Lauderdale

**Nieuw Amsterdam**  
2026 Sep 27



**21-DAY  
PANAMA CANAL**

Ft. Lauderdale to Vancouver

**Nieuw Amsterdam**  
2027 Apr 11

# PANAMA CANAL Shore Excursions

From Caribbean stingrays to Colombian emeralds, our curated Panama Canal shore excursions immerse you in the natural and man-made marvels of each destination.



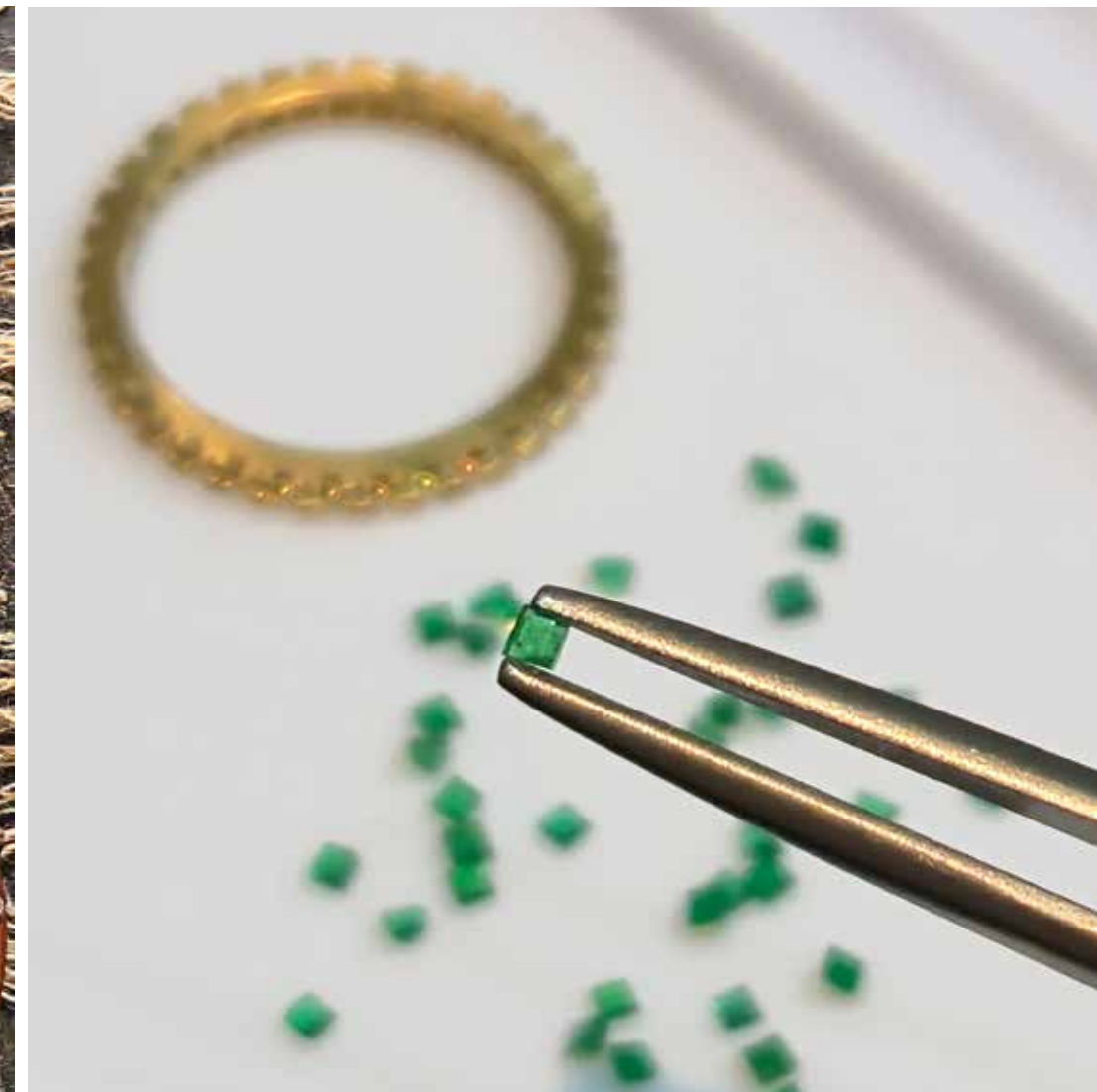
Port: [RelaxAway, Half Moon Cay](#)

Excursion: [Stingray Adventure](#)



Port: [Acajutla](#)

Excursion: [Ancestral Cacao Plantation & Chocolate-Making Workshop](#)



Port: [Cartagena](#)

Excursion: [The Gem of Colombia: Emerald Jewelry-Making Class](#)

# Hawaii

## THE SPIRIT OF ALOHA

Our convenient West Coast departures from San Diego, Vancouver, and Seattle include roundtrip options, making it easy to delve into the history, culture, and natural wonders of four unique Hawaiian Islands.

- Polynesian Fitness
- Hula Dance Lessons
- Fresh Flower Lei Making
- Aloha Sunset Music Hour
- Olelo Hawaii: Learn to Speak Hawaiian





Holiday meal

# A HAWAIIAN Holiday

## 18-DAY *CIRCLE HAWAII HOLIDAY*

Celebrate the holidays while visiting four Hawaiian Islands and Mexico on a roundtrip voyage from San Diego.

## START NEW TRADITIONS

Savor a sumptuous Thanksgiving feast and delight in holiday cheer.

## NO COOKING OR CLEANING

Leave the party planning to us while you simply relax, rejuvenate, and reconnect with your family and friends.



Tropical holiday tree



Classic holiday favorites



Holiday tea

# 17- to 18-Day Itineraries

Convenient West Coast departures combine expansive Days at Sea with unforgettable days on shore exploring Hawaii’s natural wonders, Polynesian heritage, World War II history, and mesmerizing marine life.

## FEATURED PORTS



Road to Hana, Kahului, Maui, Hawaii

### EXPERIENCE KAHULUI’S NATURAL BEAUTY

Get in touch with nature on the beautiful island of Maui. Soar over breathtaking waterfalls and the famous Road to Hana on a rainforest helicopter tour. Watch humpback whales breach along Maui’s scenic sea cliffs or soak in the sweeping panoramic views from the rim of a dormant volcano in Haleakala National Park.



Nāhuku, Thurston Lava Tube, Hawaii Volcanoes National Park, Hawaii, Hawaii

### HANG TEN IN HILO

Scenically set along the “Big Island” of Hawaii’s eastern coast, Hilo offers a mix of natural beauty and cultural heritage. A hub of bountiful farmers’ markets, intriguing galleries, and quaint shops, the town serves as a gateway to the island’s UNESCO-listed volcanoes, sparkling waterfalls, black-sand beaches, and more.



### 17-DAY CIRCLE HAWAII

Vancouver to San Diego

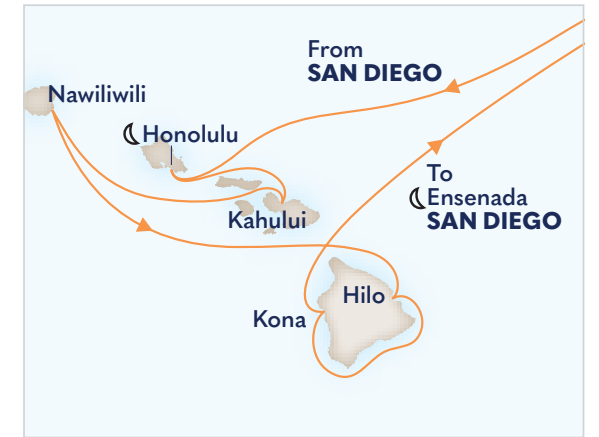
**Koningsdam**  
2026 Oct 3



### 17-DAY CIRCLE HAWAII

Roundtrip Vancouver

**Koningsdam**  
2027 Apr 7



### 17-DAY CIRCLE HAWAII

Roundtrip San Diego

**Koningsdam**  
2027 Jan 9



### 18-DAY CIRCLE HAWAII HOLIDAY

Roundtrip San Diego

**Zaandam**  
2026 Nov 19

# HAWAII ITINERARIES



Road to Hana, Maui, Hawaii



## 18-DAY CIRCLE HAWAII

Roundtrip San Diego

**Koningsdam**  
2027 Jan 26



## 27- OR 28-DAY GLACIERS & VOLCANOES: ALASKA TO HAWAII

Vancouver or Seattle to Seattle

**Noordam**  
2026 Sep 6 or 7

# HAWAII Shore Excursions

From fern grottoes to archaeological sites, our curated Hawaii shore excursions are designed to immerse you in the natural beauty and rich history of each destination.



Port: [Nawiliwili](#)

Excursion: [Wailua River Cruise & Fern Grotto](#)



Port: [Kahului](#)

Excursion: [Hana Rainforest: Helicopter Adventure with Landing](#)



Port: [Nawiliwili](#)

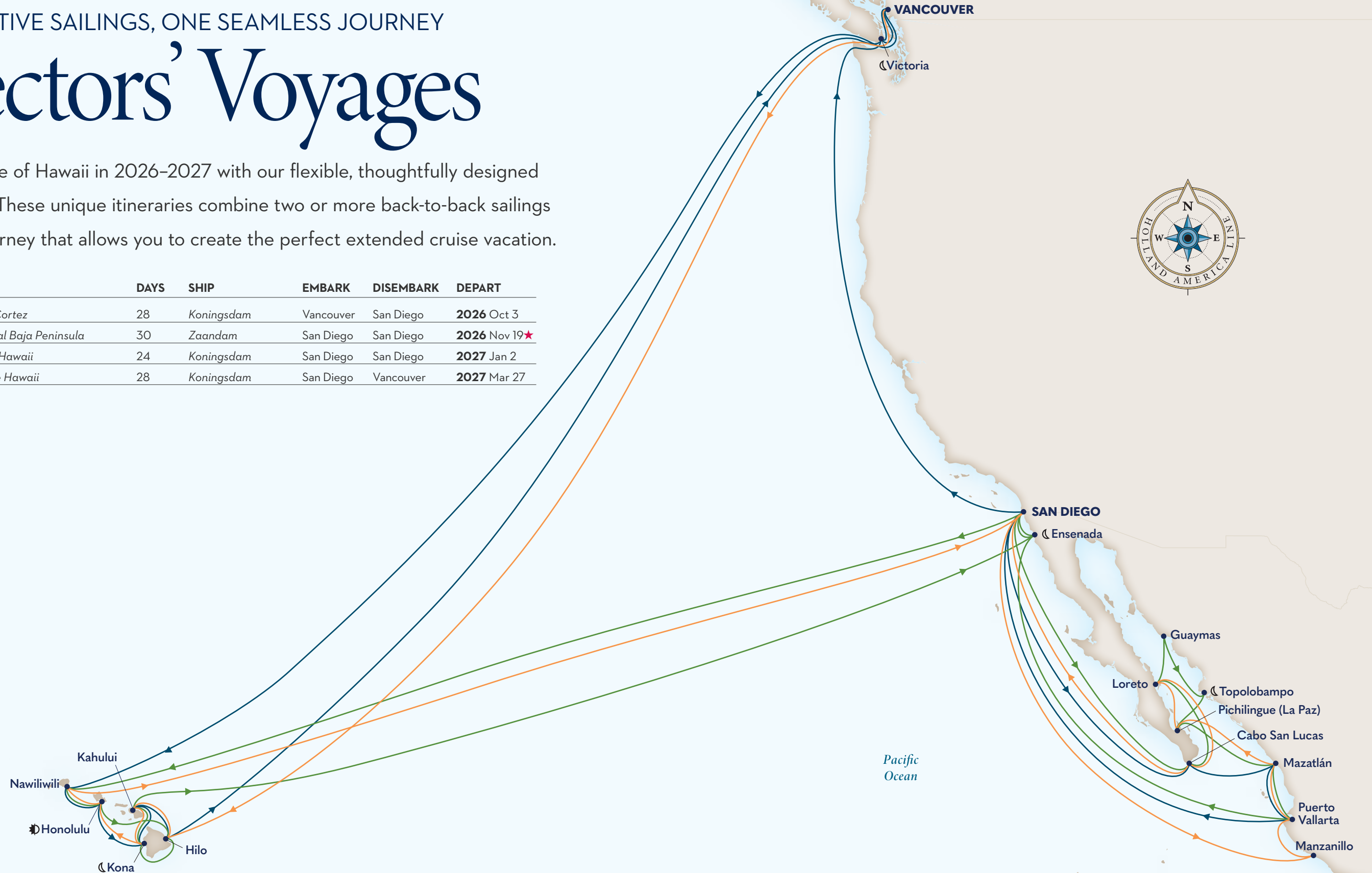
Excursion: [Kings, Trains & Waterfalls](#)

# TWO CONSECUTIVE SAILINGS, ONE SEAMLESS JOURNEY

# Collectors' Voyages

Experience even more of Hawaii in 2026-2027 with our flexible, thoughtfully designed Collectors' Voyages. These unique itineraries combine two or more back-to-back sailings into one seamless journey that allows you to create the perfect extended cruise vacation.

CRUISE	DAYS	SHIP	EMBARK	DISEMBARK	DEPART
  Circle Hawaii & Sea of Cortez	28	Koningsdam	Vancouver	San Diego	<b>2026</b> Oct 3
  Circle Hawaii & Historical Baja Peninsula	30	Zaandam	San Diego	San Diego	<b>2026</b> Nov 19★
  Baja Peninsula & Circle Hawaii	24	Koningsdam	San Diego	San Diego	<b>2027</b> Jan 2
  Mexican Riviera & Circle Hawaii	28	Koningsdam	San Diego	Vancouver	<b>2027</b> Mar 27





# Your Home

## AT SEA

Unpack once with ease amid our generous storage space and ensure peace of mind with our secure in-room safe. Pack as much or as little as you wish with our flexible laundry packages and leave the daily housekeeping to us while you unwind with massage shower heads, pamper yourself with Elemis Aromapure toiletries, and drift off to sleep in your Mariner's Dream™ or Duxiana® bed.

### COMFORTABLE STATEROOMS

Settle into a comfortable Inside stateroom, take in sea views from an Ocean View stateroom, or spread out in a Verandah stateroom featuring floor-to-ceiling windows and (of course) a spacious, private, teak-lined verandah.

### ELEGANT SUITES

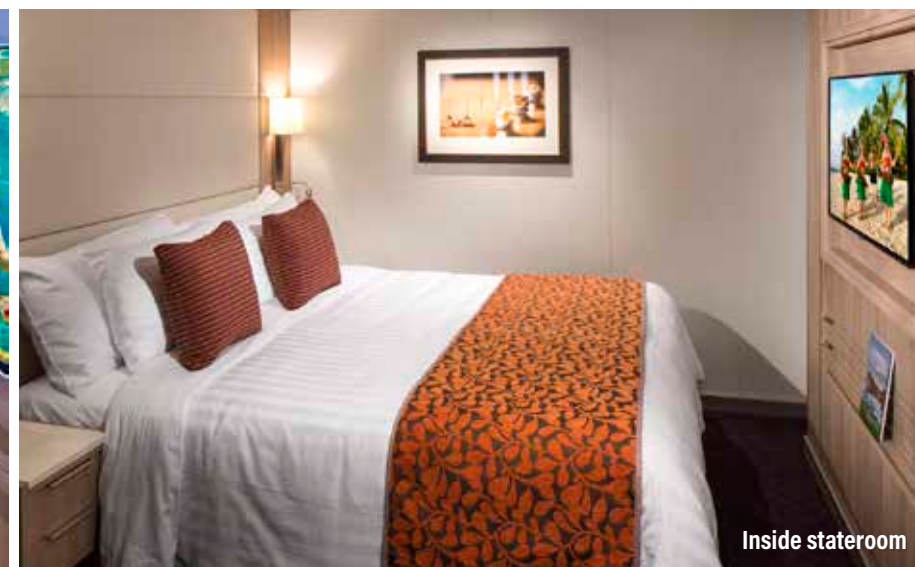
Both smaller Vista and larger Signature Suites feature a spacious sitting area, sofa bed, dual-sink vanity, and more. For a more inclusive experience, Neptune and Pinnacle Suites offer perks ranging from flowers to priority boarding.



Signature Suite



Verandah stateroom



Inside stateroom



Accommodations vary by ship. Scan or click here to compare dining, activities, and other amenities across our fleet.

# HOLLAND AMERICA Traditions

At Holland America, our Dutch heritage is alive and well. From classic to contemporary, our onboard cruising traditions continue to endure and evolve.



## ROYAL DUTCH TEA

Held on Days at Sea, our Royal Dutch Tea features Dutch snacks and treats plus our usual offerings.



## MINT & GINGER SERVICE

Our dinner mint and ginger service includes such thoughtful touches as Holland America-branded pillow mints.



## DUTCH DAY

Once per cruise, enjoy a Dutch Dinner as well as turndown service featuring a mini *stroopwafel* on your pillow.



## ORANGE PARTY

Don your best orange attire and end Dutch Day with live entertainment and specialty orange cocktails.



Dining Room

# Dining

## BARS & LOUNGES

Find everything from fresh seafood, specialty coffee, and craft cocktails to burgers, pasta, and fresh-made desserts. You can even treat yourself to breakfast in bed or a late-night snack with our complimentary 24-hour room service.

### COMPLIMENTARY DINING OPTIONS

24-hour room service	Lido Market
Dining Room	New York Pizza†
Dive-In	

### SPECIALTY RESTAURANTS\*

Canaletto	Rudi's Sel de Mer
Morimoto by Sea	Tamarind
Pinnacle Grill	

### COFFEE & TREATS\*

Crow's Nest Café	Grand Dutch Café
Gelato	Library Café

### BARS & LOUNGES\*

Crow's Nest	MIX	Pinnacle Bar
Explorer's Lounge	Ocean Bar	Sea View Bar
Lido Bar	Panorama Bar	Tamarind Bar
		Taste



Fresh Halibut



Pineapple Piña Colada



Offerings vary by ship. Scan or click here to compare dining, activities, and other amenities across our fleet.

[CLICK HERE TO LEARN MORE](#)



\*For a nominal fee. †New York Deli & Pizza on board *Koningsdam*.

# Destination Dining™

FRESH LOCAL INGREDIENTS



At Holland America, our cuisine goes beyond the plate. We offer more than 80 varieties of fresh fish sourced locally from across our worldwide network via the first-of-its-kind Global Fresh Fish Program. With native fresh fish and ingredients sourced directly from those who know them best, our onboard Destination Dining™ tells the story of each region through its unique flavors — from Pacific mahi-mahi and Hawaiian pink snapper to taro rolls and golden pineapple.

Looking for even more authentic tastes of the region? Join us for onboard cooking demonstrations and learn how to make macadamia-crustéd grouper, Kauai-style poké, lomi-lomi salmon, and seared opah with mango avocado relish.



# Activities

## DAY & NIGHT

Begin your day with a meditative Tai Chi session, a spin class in the Fitness Center, or a walk around the teak Promenade Deck. In the afternoon, create a masterpiece at one of our guided painting sessions or make new friends on the pickleball court. Once the sun goes down, try your luck in the Casino, catch an interactive game show, or dance the night away at our award-winning music clubs.



Tai Chi on deck

### MUSIC CLUBS



### ONLY ON THE WORLD STAGE



AND SO MUCH MORE

### SPORTS & ACTIVITIES

- |                         |                         |
|-------------------------|-------------------------|
| Acrylic Paint on Canvas | Pickleball              |
| Adult Coloring          | Punch Needle Embroidery |
| Cornhole                | Shuffleboard            |
| Flower Arranging        | Table Tennis            |
| Modern Brush Lettering  | Tai Chi                 |
| Origami                 | Watercolor Painting     |



Sport Court



Billboard Onboard



Offerings vary by ship. Scan or click here to compare dining, activities, and other amenities across our fleet.

CLICK HERE TO **LEARN MORE**





Spa & Salon

# THE ULTIMATE Spa Experience

Rejuvenate your senses and nourish every aspect of your well-being in the award-winning Spa & Salon. Soothe tired muscles in the Hydropool and recharge in the peaceful Thermal Suite while surrounded by spectacular sea views.

## SPA SERVICES

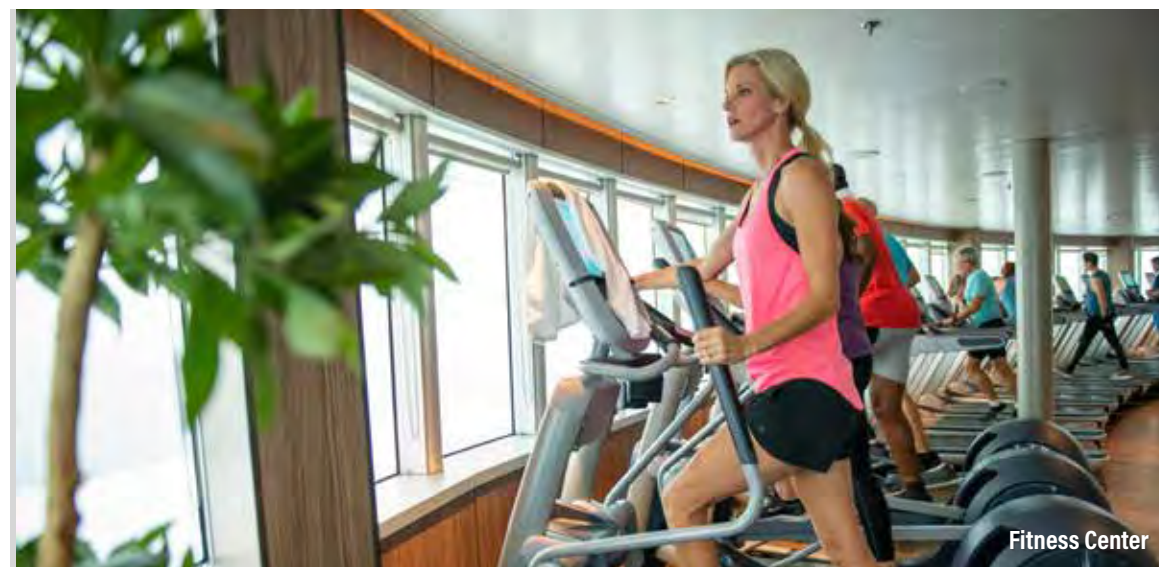
- |                      |                           |
|----------------------|---------------------------|
| Acupuncture Services | Massage & Body Therapies  |
| Couples' Treatments  | Medi-Spa Treatments       |
| Facial Treatments    | Teeth Whitening           |
| Hair & Nail Services | Thermal Suite & Hydropool |

## WELLNESS & FITNESS

- |                           |                          |
|---------------------------|--------------------------|
| Body Composition Analysis | Nutritional Consultation |
| Circuit Training          | Pain Management Workshop |
| Fitness Center            | Personal Training        |
| Guided Meditation         | Sport Court              |



Hot stone massage



Fitness Center



Offerings vary by ship. Scan or click here to compare dining, activities, and other amenities across our fleet.

[CLICK HERE TO LEARN MORE](#)



LIMITED-TIME OFFER

# Early Booking Bonus Have it all.

Save up to 60% on top amenities with the Have It All Early Booking Bonus\*! Enjoy all the benefits of our standard Have It All package, including Shore Excursion and Specialty Dining Credits, plus free prepaid Crew Appreciation, our Low Price Guarantee\*, and free upgrades to the Elite Beverage Package and Premium Wi-Fi.

Panama City, Panama

## BOOK EARLY TO RECEIVE OUR BEST VALUE ON TOP AMENITIES



### FREE PREPAID CREW APPRECIATION

Crew Appreciation, or stateroom gratuities, is covered for you (a value of us\$17 per day for Interior, Ocean View, and Verandah staterooms and us\$19 per day for suites) to recognize the efforts of a wide variety of crew members who contribute to the experiences of all our guests.



### FREE UPGRADE PREMIUM WI-FI

Stay connected throughout your journey. Surf the web, use social media, check email, and send messages to family and friends.



### FREE UPGRADE ELITE BEVERAGE PACKAGE

Choose from a large selection of wine, beer, spirits, and cocktails, plus non-alcoholic options such as sodas, coffees, and more – with service charges included.



### SPECIALTY DINING

Enhance your cruise with award-winning specialty dining at Canaletto, Tamarind, or the famed Pinnacle Grill – with service charges included.



### LOW PRICE GUARANTEE

If you find a lower, identical fare for your cruise before this offer expires, you are eligible to receive the difference in the form of Onboard Credit, a stateroom upgrade, or another benefit.



### SHORE EXCURSIONS

The longer you cruise, the more you can explore!

- Cruise 6–9 days and receive us\$100 Shore Excursion Credit
- Cruise 10–20 days and receive us\$200 Shore Excursion Credit
- Cruise 21+ days and receive us\$300 Shore Excursion Credit

Click to see our **HAVE IT ALL EARLY BOOKING BONUS ITINERARIES**



Book Today - Limited-Time Offer

## Early Booking Bonus Have it all.

**Up to 3 Nights' Specialty Dining**  
*Includes service charges; varies by voyage*

**Up to us\$300 Shore Excursion Credit**  
*Varies by voyage length*

**FREE UPGRADE Elite Beverage Package**  
*Includes service charges*

**FREE UPGRADE Premium Wi-Fi**

**FREE Prepaid Crew Appreciation**  
*Gratuities*

**LOW PRICE GUARANTEE**  
*U.S. & Canada only*

See page 23 for terms and conditions.

# TERMS & CONDITIONS

## RESERVATIONS

Accommodations are limited. If you use a travel agent/travel agency ("TA") to book your reservation, you shall pay deposits and payments for Holland America Line's ("HAL") services to such TA. HAL will issue travel documents only if and when it has received full payment from TA. HAL will make any refunds to the applicable TA based only on the amount HAL actually received, less any applicable cancellation fees and charges; guest is responsible for obtaining any refund monies from TA.

## DEPOSIT & FINAL PAYMENT REQUIREMENTS

Deposit is required at the time of cruise booking and final payment of balance must be received no later than 90 days prior to departure.

## CANCELLATIONS

Our cancellation policy allows you to cancel your 2026–2027 Hawaii & Panama Canal cruise 90+ days prior to departure, depending on the cruise, and receive a full refund. If you cancel your 2026–2027 Hawaii & Panama Canal cruise 89 days or less prior to departure, depending on the cruise, you are required to pay a cancellation fee (including 3rd and 4th berths) as set forth below. Such fees are based on the fare paid, excluding Taxes, Fees & Port Expenses ("TFPE"), transfers, surcharges, shore and land excursions, and most pre-purchased gift(s) and/or special service(s). See more details in the Cruise Contract. For 2026–2027 Hawaii & Panama Canal, the cancellation fee amount varies based on the length of sailing and timing of cancellation as follows:

2026–2027 HAWAII & PANAMA CANAL — 14- TO 28-DAY CRUISES	
Number of Days Before Sailing Date on Which Guest Cancels Cruise	Amount of Cancellation Fee
90+ days' notice	0%
89–83 days' notice	An amount equal to deposit requirement
82–46 days' notice	50% of gross fare
45 days' notice or less	100% of gross fare

Change to arrangements may be subject to change charges.

## CREW APPRECIATION & SERVICE CHARGES

For your convenience, Crew Appreciation will automatically be added to your onboard account to recognize the efforts of a wide variety of crew members in various departments, including those in the Dining, Entertainment, Guest Services, and Galley areas. The amount of the Crew Appreciation is based on your stateroom category and is subject to adjustment at your discretion, except as otherwise provided in the Crew Appreciation and Service Charge Policy. A Service Charge will automatically be added to optional purchases of beverage packages, drinks, dining room and specialty dining, onboard parties, and other services or amenities provided to guests that are not included in the cruise fare. The Crew Appreciation and Service Charge payments on all vessels in our fleet are pooled and distributed in the form of compensation, including bonuses. For further details, please review our Crew Appreciation and Service Charge Policy.

## TAXES, FEES & PORT EXPENSES

"Taxes, Fees & Port Expenses," or "TFPE" as used by HAL, may include any and all fees, charges, tolls, and taxes imposed on HAL by governmental or quasi-governmental authorities, as well as third-party fees and charges arising from a vessel's presence in a harbor or port. TFPE may be assessed per guest, per berth, per ton, or per vessel. TFPE are subject to change, and HAL reserves the right to collect any increases in effect at the time of sailing even if the fare has already been paid in full.

## GUESTS WITH DISABILITIES

Holland America Line seeks to accommodate the needs of guests with disabilities, to the extent feasible. Some accommodations require advanced notification. For more information, visit the Accessible Cruising section of our website.

## MEDICAL SERVICES

Each of our ships is equipped with limited medical facilities that are staffed by a physician and registered nurses. Unless otherwise indicated in an active HAL policy (for example, the COVID-19 Protection Program), guest will be charged a fee for all medical services and medications obtained on board. If the onboard physician is unable to care for your needs on board, you will be transferred to medical facilities on shore. If your condition will require you to have a special medical apparatus or assistance on board, we must be made aware of that at the time of booking in order to determine whether we can accommodate your needs.

## PASSPORTS / VISAS / IMMUNIZATIONS

You are solely responsible for securing and having available all proper documentation for the countries visited on your cruise or land tour and for bringing all necessary travel documents such as passports, visas, proof of citizenship, re-entry permits, minors' permissions, and medical certificates showing all necessary vaccinations. Guests should check with their TA or the appropriate governmental authority to determine the necessary documents. Guest will be refused boarding or disembarked without recourse or liability for refund, payment, compensation, or credit of any kind if they do not have proper documentation, and they will be subject to any fine or other costs incurred by HAL that result from improper documentation or non-compliance with applicable regulations.

## RESPONSIBILITY

All HAL vessels are owned by HAL Antillen NV. and operated by Holland America Line NV. in its capacity as general partner of Cruzeiroport Curaçao CV. Transportation on board the ship is provided solely by the Shipowner and Operator and pursuant to the Cruise Contract that you will receive prior to embarkation. Ships' Registry: The Netherlands.

Non-Holland America Line services (for example, shore excursions) are generally performed by independent contractors. These non-Holland America Line services are solely at your risk and subject to the terms or arrangements with the independent contractor. HAL assumes no responsibility with respect to these non-Holland America Line services (including cancellation, injury, or death) even though HAL may collect monies or make bookings.

## ACCURACY OF CONTENTS / GENERAL

Contents of this brochure, including terms and conditions, are subject to change at any time at the sole discretion of HAL. Please refer to [HollandAmerica.com](http://HollandAmerica.com) for up-to-date information. **Any advertised offer may be changed or revoked at any time.**

Situations may arise which, in our opinion, make it necessary for us to cancel, advance, or postpone a scheduled departure, change itineraries, or make substitutions involving hotels, restaurants, ports of call, other travel components, vessels, or other modes of transportation. In that event, we do not assume responsibility or liability for any resulting losses, expenses, or inconvenience. We are not required to make refunds once travel commences, regardless of the reason for guests being unable to complete their travel.

The ship names and all other trademarks, slogans, logos, and imagery used herein are, whether or not registered, owned by Holland America Line NV.

**All guests will be required to agree to the Cruise Contract and all information and terms therein.**


 CALL YOUR TRAVEL ADVISOR OR  
**1-877-SAIL HAL (1-877-724-5425)**



  CALL YOUR TRAVEL ADVISOR  
OR **0344 338 8605**


 CALL YOUR TRAVEL ADVISOR  
OR **1300 987 322**

**OR VISIT  
HOLLANDAMERICA.COM**

INTRODUCTION  
**Holland America**

 **HAVE IT ALL EARLY BOOKING BONUS TERMS & CONDITIONS** Have It All Early Booking Bonus Offer ("Early Booking Bonus Offer") fare and its parts are neither transferable nor refundable and have no cash value. Early Booking Bonus Offer fares available only on select departures and exclude Grand Voyages and any cruise lasting 5 days or less. Any advertised fare may be changed or revoked at any time. Fares are subject to full terms and conditions, available at [HollandAmerica.com/package-terms](http://HollandAmerica.com/package-terms). **Elite Beverage Package** has a daily limit of 15 beverages. Available only for beverages priced at US\$15 or less. Must be 21+ for alcoholic beverages. Management reserves the right to revoke the package and may refuse service for any reason. The package excludes beverages purchased in The Shops, from the mini-bar, through 24-hour room service, or on Half Moon Cay. **Specialty Dining** is based on cruise duration and ship type. Dining options are determined by ship and exclude all events in Pinnacle Grill. **Shore Excursion** offer is based on cruise duration and is per person, not per stateroom. For 6- to 9-day cruises, eligible guests will receive US\$100 credit per person to apply toward their shore excursion purchase(s). For 10- to 20-day cruises, eligible guests will receive US\$200 credit per person to apply toward their shore excursion purchase(s). For 21+ day cruises (excluding Grand Voyages), eligible guests will receive US\$300 credit per person to apply toward their shore excursion purchase(s). Shore Excursion Credit must be used on corresponding cruise and is non-refundable. **Premium Wi-Fi:** All onboard Internet usage is subject to Holland America Line's ("HAL's") standard policies, which may limit or block browsing/use of some sites or applications due to network security and bandwidth usage. Offerings are subject to change without notice. Plan can be used on any device, but only one device can be actively connected at a time. Upgrades are available once on board. Offer applies to 1st/2nd guests in a stateroom only. **Low Price Guarantee:** If a guest books a HAL cruise with the Early Booking Bonus Offer (the "original booking") and such guest finds a cheaper price for an identical booking within the duration of the Early Booking Bonus Offer (the "Comparison Fare"), the difference may be compensated in the form of Onboard Credit, a stateroom upgrade, or another method. HAL reserves the sole right to determine the method of compensation made to guests. A fare will be considered a Comparison Fare only if its booking consists of details that are identical to those of the original booking (including, but not limited to, the same ship, sail dates, stateroom category, and number of guests as the original booking). A determination as to whether the located fare is identical to the original booking will be at HAL's sole discretion. HAL reserves the right to apply this price protection and offer at its discretion. Other restrictions and exclusions may apply. Holland America Line is neither responsible nor liable for any printing errors. Promotion is based on promotion code(s) N2 and based on double occupancy. Ships' Registry: The Netherlands.

  **HAVE IT ALL EARLY BOOKING BONUS TERMS & CONDITIONS** Have It All Early Booking Bonus Offer ("Early Booking Bonus Offer") is available for a limited time, on a first-come, first-served basis, to the first guests that make a new booking in connection with the Early Booking Bonus Offer while it is available. Taxes, Fees & Port Expenses are included. All values herein are in USD. Holland America Cruise Line ("HAL") may change or revoke the Offer or its parts at any time. Early Booking Bonus Offer is valued at US\$160 per day. Other exclusions and terms may apply; void where prohibited. Early Booking Bonus Offer and its parts are neither transferable, substitutable, nor redeemable for cash. Early Booking Bonus Offer is available for 1st/2nd guests only. Early Booking Bonus Offer fares available only on select departures and exclude Grand Voyages and any cruise lasting 5 days or less. **Elite Beverage Package** has a daily limit of 15 beverages, including all beverages priced at US\$15 or less and beverage service charges. The Elite Beverage Package includes wine, beer, spirits, cocktails, non-alcoholic beverages, sodas, bottled water (sparkling or still, 400ml or less), and coffee. Guests must order one beverage at a time and be 21 years+ for alcoholic beverages. Sharing of any beverage or the package is not permitted. Beverage management/HAL reserve the right to revoke the package if misused and refuse service for any reason, including service of alcoholic beverages to intoxicated guests. Package excludes beverages purchased in The Shops, from the mini-bar, through 24-hour room service, or on Half Moon Cay. **Specialty Dining** is based on cruise duration and ship type. For 6- to 9-day cruises, guests will receive one night at Pinnacle Grill, Canaletto, or Tamarind. For ships without Tamarind, guests will receive one night at Pinnacle Grill or Canaletto. For 10- to 20-day cruises, guests will receive two nights: one night at Pinnacle Grill and one night at Canaletto or Tamarind. For ships without Tamarind, guests will receive two nights: one night at Pinnacle Grill and one night at Canaletto. For 21+ day cruises (excluding Grand Voyages), guests will receive three nights: one night at Pinnacle Grill, one night at Tamarind, and one night at Canaletto. For ships without Tamarind, guests will receive three nights: two nights at Pinnacle Grill and one night at Canaletto. Offer excludes Specialty Dining Events in Pinnacle Grill such as Sel de Mer, A Taste of De Librije, and Cellar Master Dinner. Reservations and dining times will be available to pre-reserve. **Shore Excursion Credit** is based on cruise duration and is per person, not per stateroom. For 6- to 9-day cruises, eligible guests will receive US\$100 credit per person to apply toward their shore excursion purchase(s). For 10- to 20-day cruises, eligible guests will receive US\$200 credit per person to apply toward their shore excursion purchase(s). For 21+ day cruises (excluding Grand Voyages), eligible guests will receive US\$300 credit per person to apply toward their shore excursion purchase(s). Shore Excursion Credit must be used on corresponding cruise and is non-refundable. Shore Excursion Credit can neither be redeemed for cash value nor applied to a non-shore excursion item. **Premium Wi-Fi:** All onboard Internet usage is subject to Holland America Line's ("HAL's") standard policies, which may limit browsing of some sites due to network security and bandwidth usage. Applications that use high bandwidth may be blocked and offerings are subject to change with or without notice. The plan can be activated on any device, but only one device can be actively connected at a time. Upgrades are available once on board for a single day, the remaining duration of the voyage, or adding more devices. Offer applies to 1st/2nd guests in a stateroom only. **Crew Appreciation:** Receive prepaid stateroom gratuities on board. Gratuities for other services, including, but not limited to, bar, dining room, wine accounts, and spa/salon services, are not included. HAL is neither responsible nor liable for any printing errors. Promotion is based on promotion code(s) N2 and based on double occupancy. Ships' Registry: The Netherlands.

 **HAVE IT ALL EARLY BOOKING BONUS TERMS & CONDITIONS** Have It All Early Booking Bonus Offer ("Early Booking Bonus Offer") is available for a limited time, on a first-come, first-served basis, to the first guests that make a new booking in connection with the Early Booking Bonus Offer while it is available. Taxes, Fees & Port Expenses are included. All values herein are in USD. Holland America Cruise Line ("HAL") may change or revoke the Offer or its parts at any time. Early Booking Bonus Offer is valued at US\$160 per day. Other exclusions and terms may apply; void where prohibited. Early Booking Bonus Offer and its parts are neither transferable, substitutable, nor redeemable for cash. Early Booking Bonus Offer is available for 1st/2nd guests only. Early Booking Bonus Offer fares available only on select departures. **Elite Beverage Package** has a daily limit of 15 beverages, including all beverages priced at US\$15 or less and beverage service charges. The Elite Beverage Package includes wine, beer, spirits, cocktails, non-alcoholic beverages, sodas, bottled water (sparkling or still, 400ml or less), and coffee. Guests must order one beverage at a time and be 21 years+ for alcoholic beverages. Sharing of any beverage or the package is not permitted. Beverage management/HAL reserve the right to revoke the package if misused and refuse service for any reason, including service of alcoholic beverages to intoxicated guests. Package excludes beverages purchased in The Shops, from the mini-bar, through 24-hour room service, or on Half Moon Cay. **Specialty Dining** is based on cruise duration and ship type. For 6- to 9-day cruises, guests will receive one night at Pinnacle Grill, Canaletto, or Tamarind. For ships without Tamarind, guests will receive one night at Pinnacle Grill or Canaletto. For 10- to 20-day cruises, guests will receive two nights: one night at Pinnacle Grill and one night at Canaletto or Tamarind. For ships without Tamarind, guests will receive two nights: one night at Pinnacle Grill and one night at Canaletto. For 21+ day cruises (excluding Grand Voyages), guests will receive three nights: one night at Pinnacle Grill, one night at Tamarind, and one night at Canaletto. For ships without Tamarind, guests will receive three nights: two nights at Pinnacle Grill and one night at Canaletto. Offer excludes Specialty Dining Events in Pinnacle Grill such as Sel de Mer, A Taste of De Librije, and Cellar Master Dinner. Reservations and dining times will be available to pre-reserve. **Shore Excursion Credit** is based on cruise duration and is per person, not per stateroom. For 6- to 9-day cruises, eligible guests will receive US\$100 credit per person to apply toward their shore excursion purchase(s). For 10- to 20-day cruises, eligible guests will receive US\$200 credit per person to apply toward their shore excursion purchase(s). For 21+ day cruises (excluding Grand Voyages), eligible guests will receive US\$300 credit per person to apply toward their shore excursion purchase(s). Shore Excursion Credit must be used on corresponding cruise and is non-refundable. Shore Excursion Credit can neither be redeemed for cash value nor applied to a non-shore excursion item. **Premium Wi-Fi:** All onboard Internet usage is subject to Holland America Line's ("HAL's") standard policies, which may limit browsing of some sites due to network security and bandwidth usage. Applications that use high bandwidth may be blocked and offerings are subject to change with or without notice. The plan can be activated on any device, but only one device can be actively connected at a time. Upgrades are available once on board for a single day, the remaining duration of the voyage, or adding more devices. Offer applies to 1st/2nd guests in a stateroom only. **Crew Appreciation:** Receive prepaid stateroom gratuities on board. Gratuities for other services, including, but not limited to, bar, dining room, wine accounts, and spa/salon services, are not included. HAL is neither responsible nor liable for any printing errors. Promotion is based on promotion code(s) N2 and based on double occupancy. To be read in conjunction with the Holland America Line Cruise Contract at [HollandAmerica.com/en\\_US/legal-privacy-australia/cruise-contract.html](http://HollandAmerica.com/en_US/legal-privacy-australia/cruise-contract.html), by which guests will be bound. Whilst all information is correct at time of publication, offers are subject to change or withdrawal. Carnival plc trading as Carnival Australia ABN 23 107 998 443 as agent for Holland America Line. Ships' Registry: The Netherlands.



HOLLAND AMERICA LINE  
**NAVIGATOR**

**DOWNLOAD THE  
NAVIGATOR® APP**

The **Holland America Line Navigator® App** is your indispensable tool for cruise planning, essential updates, embarkation, managing your onboard experience, and booking shore excursions.